

# FACILITY RENTALS

## Grace Community CRC

Our facilities are modern, bright, and spacious, and can be used for a wide variety of rental needs! Use the document below to view the rental spaces we have available, and read about our requirements for renting our facilities.



Our building is one level, and is fully wheelchair accessible, including an automated entrance and a wheelchair accessible bathroom.



Prices stated in this document are for the **first hour of use**. If facilities are needed for a longer time, submit the inquiry form and we will send a formal quotation.



Scan the QR code to complete our rental inquiry form.

## Room Descriptions



**SANCTUARY**

**SANCTUARY** a bright, open space suitable for weddings, concerts, religious functions, or funerals.

Fully equipped with retractable overhead projector screens, livestream, and sound system. Sound, slides, or livestream must be operated by Grace Community CRC A/V Technicians (see pricing below). Chairs may not be moved from their configuration.

**ROOM CAPACITY** approximately 300 people

**RATE FOR FIRST HOUR** \$100/hr

# FACILITY RENTALS

## Grace Community CRC

**FOYER** Bright, spacious, open-concept foyer space with couches and armchairs dispersed throughout the room. Suitable for standing receptions, funeral visitations, or other events.

*Couches cannot be moved from their locations. While food is permitted in the foyer, this room cannot be used for sit-down meals. Sit-down meals can only be served in the Multi-purpose room or Café. A glass dividing wall can be used to separate the foyer from the sanctuary (wall may only be moved by Church personell)*

**EXPECTATIONS** When renting the Foyer, we expect that the renters will ensure that the furniture is used as intended and treated with respect.

**RATE FOR FIRST HOUR** \$100/hr



FOYER



MULTIPURPOSE ROOM

**MULTIPURPOSE ROOM** A multi-functional room suitable for sit-down meals and receptions, conferences, parties, games, gym activities, or other events. Equipped with a projector and sound equipment (microphone and speakers).

*Glass doors open to the patio (included in Multi-purpose room rental).*

**ROOM CAPACITY** The multi-purpose room can accomodate 100 people with chairs only, and 72 people with chairs and tables.

**RATE FOR FIRST HOUR** \$200/hr



# FACILITY RENTALS

## Grace Community CRC

**CAFE** A bright, cozy space with tables and a kitchenette (refridgerator, dishwasher, coffee machine/tea kettle, and microwave.)

Suitable for smaller gatherings or meals, meetings, presentations, and events with refreshments. Equipped with a TV.

**ROOM CAPACITY** The space can accomodate approximately 35 people seated around tables.

**RATE FOR FIRST HOUR** \$75/hr



**BOARD ROOM** Board room contains a long table with integrated outlets, and is equipped with a TV for presentations. Dividing wall can be opened into the prayer room.

Tables must remain in the long table layout.

**PRAYER ROOM** A cozy space with comfortable armchairs, a coffee table, and working fireplace. Suitable for small gatherings or as a space for a family to gather prior to a wedding or funeral. Dividing wall can be opened into the board room.

**ROOM CAPACITY** The board room can accomodate approximately 20 people. The prayer Room can comfortably accomodate 5 people seated in armchairs, with some space for additional seating.

**RATE FOR FIRST HOUR** \$150/hr  
For the family to gather prior to a funeral \$ FREE

# FACILITY RENTALS

## Grace Community CRC

**KITCHEN** Commercial grade, certified kitchen, with ample counter space and a large island. Included in Kitchen rental: all tools and equipment, two large ovens and gas stove ranges, two sets of deep sinks suitable for washing dishes, a commercial dishwasher, a freezer, refrigerator, and microwave.

**FOOD HANDLERS CERTIFICATION** Anyone who rents the kitchen must provide a copy their food safe certification.

**EXPECTATIONS** All tools and equipment must be returned to their storage locations clean and in good condition. (Subject to a fee)

**ROOM CAPACITY** Maximum capacity of 18 people

**RATE FOR FIRST HOUR** \$75/hr



**KITCHEN**



**CLASSROOMS**

**CLASSROOMS** Our classrooms are multi-functional spaces suitable for small gatherings, meetings, activities, or other events. Each room is equipped with a television, and tables and chairs can be set up for meetings or crafts.

Rooms 5-6 and 7-8 can be expanded into larger rooms by opening a dividing wall.

**ROOM CAPACITY** Each individual classroom can hold approximately 10-15 adults, depending on the activity. Rooms with moveable walls can hold a larger group.

**RATE FOR FIRST HOUR** \$60/hr



# FACILITY RENTALS

## Grace Community CRC

## Services

### AUDIO-VISUAL SERVICES

*Per Technician: \$45/hr (3 hour minimum)*

*Sanctuary sound system, livestream, or projector slides must be operated by a Grace Community CRC A/V Technician and equipment use is subject to their availability.*

*Technicians are not required for all other audio-visual equipment (ie. Classroom TVs, Multi-purpose room equipment), but may be available upon request (subject to standard fees).*

### CUSTODIAL FEE

*Determined by Rental Coordinator*

*All rentals will be subject to a custodial fee, assessed by the Rental Coordinator. Fee will be included in the rental quote prior to creation of a rental contract.*

## Additional Fees

### SECURITY DEPOSIT

*A security deposit of 50% of the total rental fee, with a minimum of Two Hundred Dollars (\$200.00) is required and must be made with the rental application. If rental contract is adhered to and the facilities are left in original condition, the deposit will be refunded to the applicant.*

### PROOF OF INSURANCE (PAYABLE TO OTHERS)

*We require all renters to provide a certificate of insurance indicating an insured liability amount of a minimum of \$2 million and naming the Church as an additional insured for the event or function to be held by the applicant on the premises of the Church on the date of the rental.*

## Penalty Fees

### DAMAGE/BREACH OF CONTRACT

*To be assessed*

*If damage occurs to the facilities or the terms of the contract are not adhered to, renters may be subject to a fee, deducted from the security deposit.*

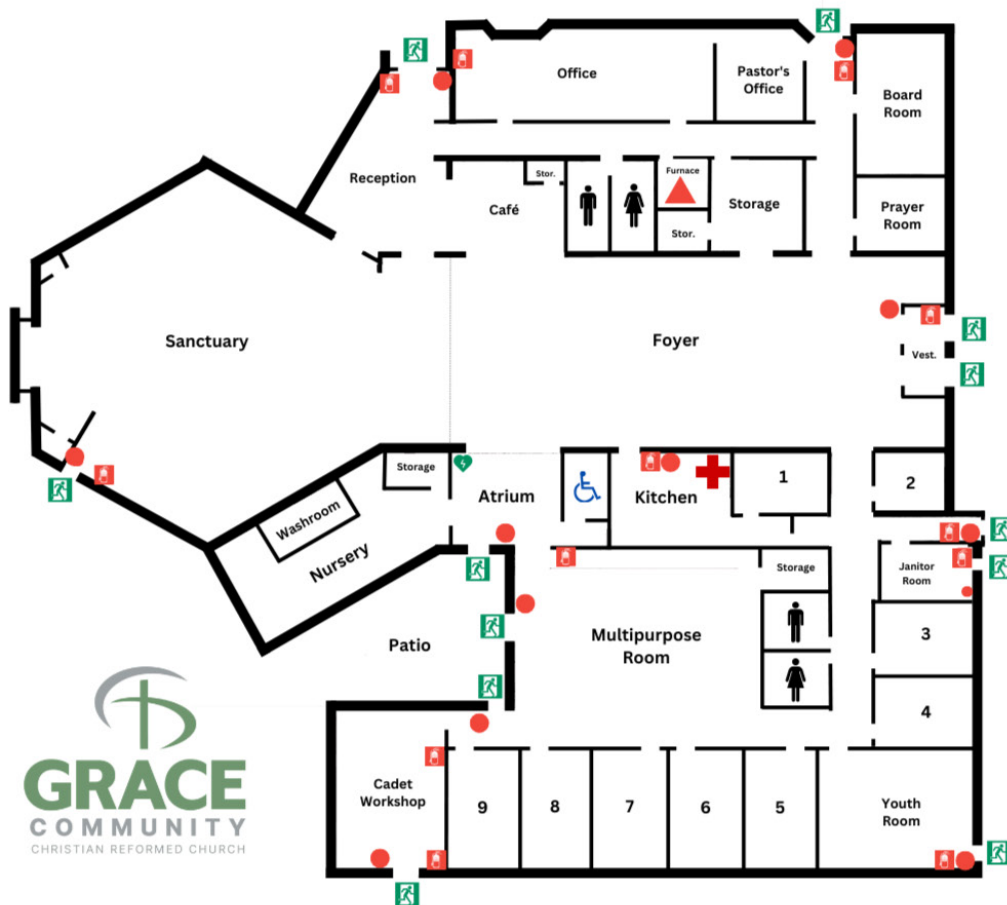
# FACILITY RENTALS

## Grace Community CRC

## Floor Plan

USE THE FOLLOWING FLOOR PLAN TO HELP INFORM YOUR ROOM SELECTION

Please note: the Office, Cadet Workshop, Nursery, and Youth Room are not available to rent.



### Legend

- First Aid Kit
- AED
- Exit
- Fire Extinguisher
- Fire Alarm Pull
- Fire Panel
- Accessible Washroom
- Women's Washroom
- Men's Washroom



Scan the QR code to complete  
our rental inquiry form.